

Purified Anti-Human CD2 Antibody[Lo-CD2a], Functional Grade

catalog number: AN007910

Note: Centrifuge before opening to ensure complete recovery of vial contents.

Description

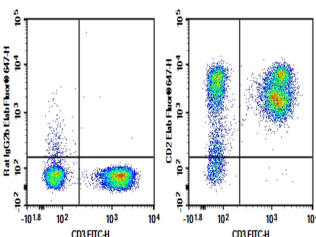
Reactivity	Human
Immunogen	Recombinant Human CD2 protein
Host	Rat
Isotype	Rat IgG2b, κ
Clone	Lo-CD2a
Purification	>98%, Protein A/G purified
Buffer	Sterile PBS, pH 7.2. < 1.0 EU per mg of the antibody as determined by the LAL method.

Applications

Recommended Dilution

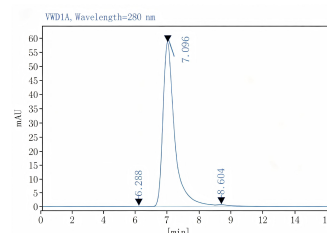
FCM	2 μ g/mL (0.5 \times 10 ⁶ -1 \times 10 ⁶ cells)
Depletion	Reported in the literature

Data



Human peripheral blood lymphocytes cell were stained with 0.2 μ g Purified Anti-Human CD2 Antibody[Lo-CD2a], Functional Grade (Right) and 0.2 μ g Rat IgG2b, κ Isotype

Control (Left), followed by Elab Fluor® 647-conjugated Goat Anti-Rat IgG Secondary Antibody, then anti-Human CD3 FITC-conjugated Monoclonal Antibody.



Monomer purity \geq 95% as determined by analytical size-exclusion chromatography (SEC)

Preparation & Storage

Storage	Store at 4°C valid for 12 months or -20°C valid for long term storage, avoid freeze / thaw cycles. This preparation contains no preservatives, thus it should be handled under aseptic conditions.
Shipping	Ice bag

Background

CD2 is a type I glycoprotein belonging to the Ig superfamily and is expressed on T cells, NK cells, B cells and some antigen presenting cells. Human CD2 binds human CD58 on antigen-presenting cells to induce co-stimulating signals in T cells.

None (Azide-Free, Low Endotoxin) are perfectly suited to be used in culture or in vivo (for nonhuman studies) for functional assays blocking, neutralizing, activation or depletion where the presence of azide may damage cells or exogenous endotoxin may signal or activate cells.

Application References

For Research Use Only

Noriko Tonomura, et al. Xenotransplantation. 2008 Mar-Apr;15(2):129-35.

For Research Use Only

Toll-free: 1-888-852-8623
Web: www.elabscience.com

Tel: 1-832-243-6086
Email: techsupport@elabscience.com

Fax: 1-832-243-6017

Rev. V1.2